

CONFIDENTIAL

FOR INTERNAL USE WITHIN
CLIENT COMPANY ONLY

THE SWEDISH TRADE & INVEST COUNCIL



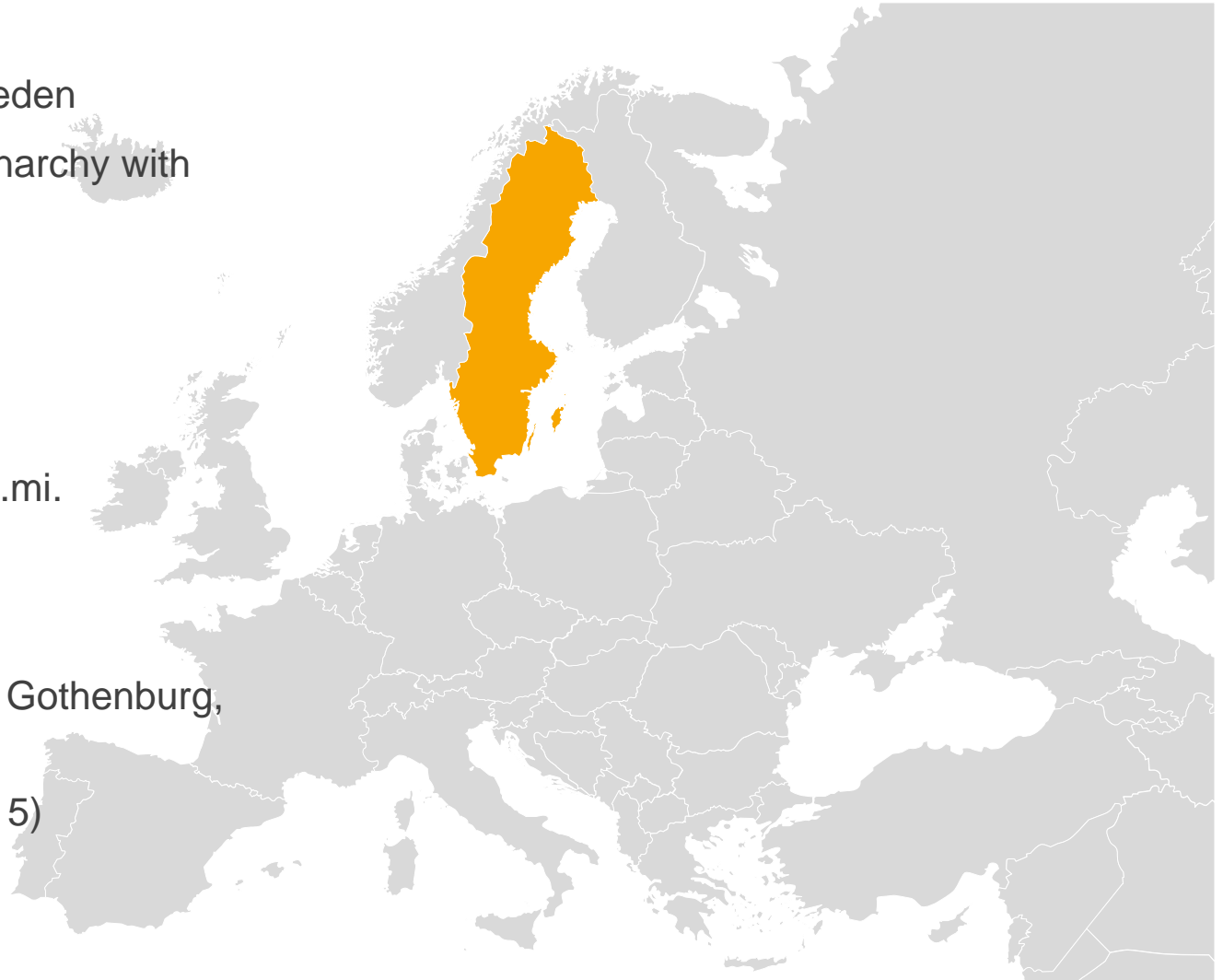
WHY SWEDEN ! INFRASTRUCTURE AND CONSTRUCTION

DEN HAAG, NOVEMBER 2016

Sören Pettersson, Senior Investment Advisor
Business Sweden

KEY FACTS ABOUT SWEDEN

- ▶ Official name: The Kingdom of Sweden
- ▶ Political system: Constitutional Monarchy with Parliamentary democracy
- ▶ Language: Swedish
- ▶ Population: 9,84 million
- ▶ Member of the European Union
- ▶ Area: 450,000 sq.km = 174,000 sq.mi.
- ▶ Time zone: GMT +1 hour
- ▶ Currency: 1 krona = 100 öre
- ▶ Largest cities: Stockholm (capital), Gothenburg, Malmö
- ▶ GDP per capita: SEK 404,100 (2015)
- ▶ GDP Growth: 3,4% (2015)



SOURCE: NATIONAL INSTITUTE OF ECONOMIC RESEARCH AND STATISTICS SWEDEN, SCB, EUROMONITOR, 2015



MADE IN SWEDEN

INTERNATIONAL COMPANIES OF SWEDISH ORIGIN



WELCOME TO BUSINESS SWEDEN

THE SWEDISH TRADE AND INVEST COUNCIL

- ▶ Business Sweden was founded on 1 January, 2013, by a merger of the Swedish Trade Council with Invest Sweden.
- ▶ We work in the interest of Sweden to make Sweden more attractive to do business with by making it easier for Swedish companies to grow internationally and making it easier for foreign companies to invest in Sweden.



THE SWEDISH TRADE & INVEST COUNCIL

BUSINESS SWEDEN INVEST DIVISION

- ▶ General and tailor-made information on business areas, investment opportunities and the Swedish economy.
- ▶ Practical advice on how to establish a business in Sweden.
- ▶ Assistance throughout the entire establishment process.
- ▶ Support in finding the best location in Sweden.
- ▶ Help in finding potential business partners (match-making).
- ▶ Introduction to useful contacts, authorities and utility providers.
- ▶ Services are confidential and free of charge.

SWEDISH FUTURE INVESTMENTS INTO INFRASTRUCTURE AND CONSTRUCTION

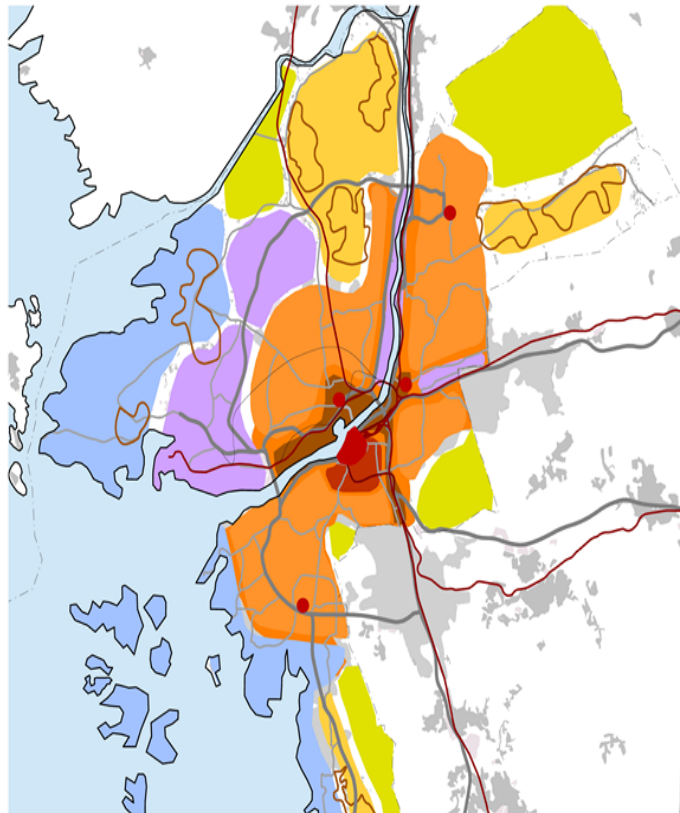
- ▶ NewSec prognosis need for 700.000 new residential livings and offices (42 million Sqm) in Sweden up to 2030
- ▶ Doubling of todays pace for building
- ▶ Total investment of 1,500 billion SEK in residential livings and office buildings
- ▶ Infrastructure, national level (Rail, roads, tunnels, maintenance etc. approx. 630 billion SEK)
- ▶ Infrastructure, regional level (Rail , Roads, Metro, Tramways etc, 600 billion SEK)

163 MUNICIPALITIES OUT OF 290 SAYS:

"We have a lack and big demand for new building of residential apartments and offices"



A close city – Gothenburg 2035



- Centrala Göteborg - Innerstaden
- Centrala Göteborg - Förynelseområden
- Mellanstaden
- Ytterstaden - Framtida utvecklingsområden
- Kustnära områden och skärgården
- Storindustri, hamn och logistik
- Naturområden
- Utredningsområde för framtida bebyggelseområden

680,000

residents of Gothenburg in 2035

70–80,000

new homes, including 50,000
in the existing city, of which
25,000 in The River City Gothenburg

80,000

more jobs of which 50,000 in
The River City Gothenburg area

Source: Expansion planning 2013



The Gothenburg Region's biggest urban development project is Älvstaden – the River City.



25,000 new homes by 2035

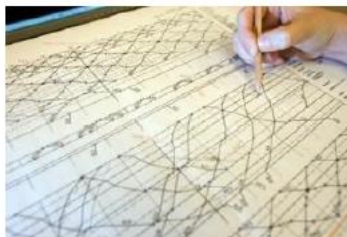
50,000 more jobs by 2035

SEK **250** billion in investment

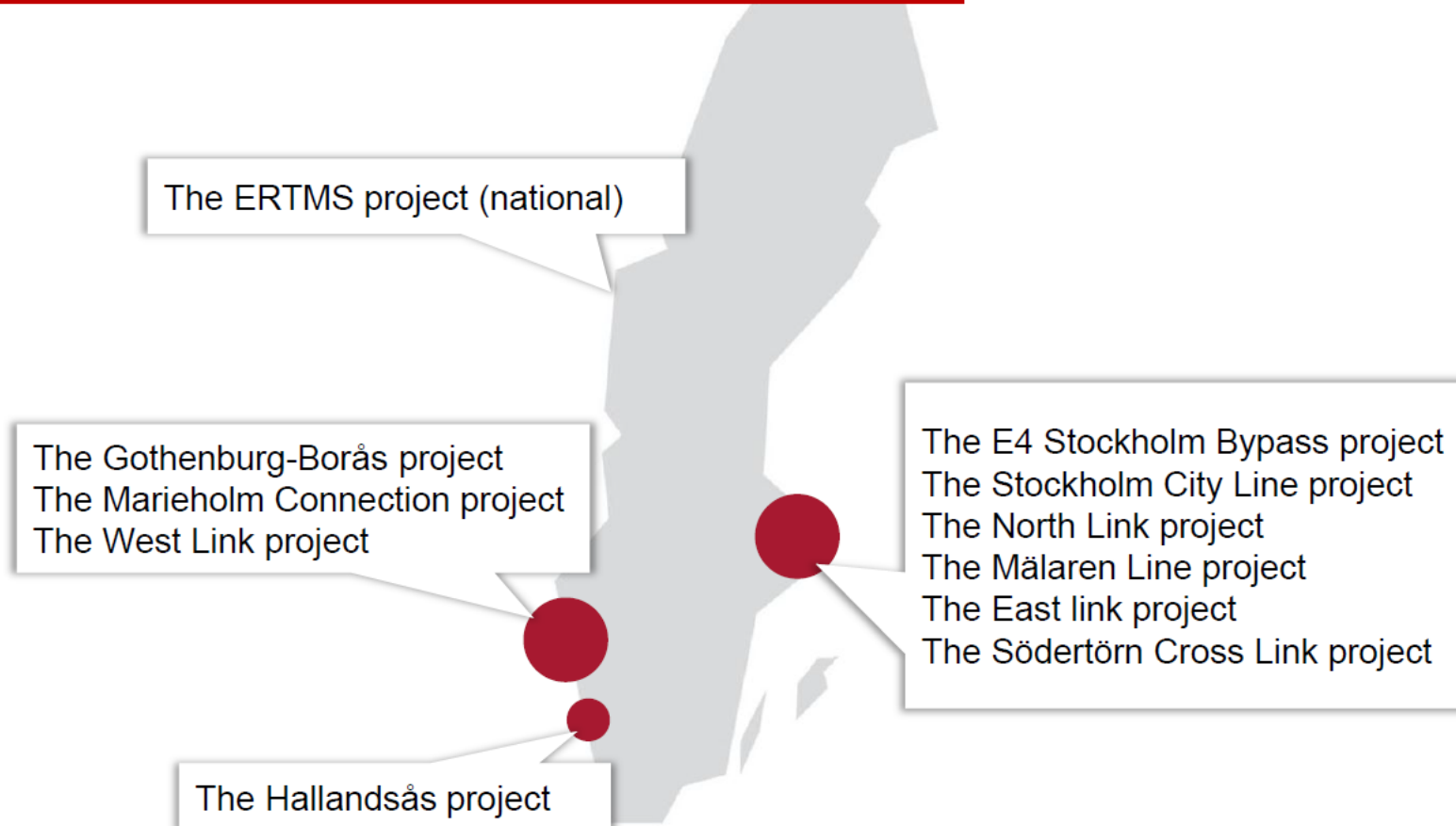




TRAFIKVERKET



Our projects



Speed railway

What is going on

at the Swedish Transport Administration?

- System requirements
- Two large projects are already in process:
 - The Gothenburg–Borås Project
 - The East Link Project
- Two Action Selection Studies:
 - Linköping–Borås
 - Jönköping–Malmö





Smart business transactions

- Properly packaged procurements
- More design and build contracts
- More surveys and design assignments at a fixed price
- Higher degree of innovation, productivity and competition
- More value for the money



The ERTMS project

Where All of Sweden.

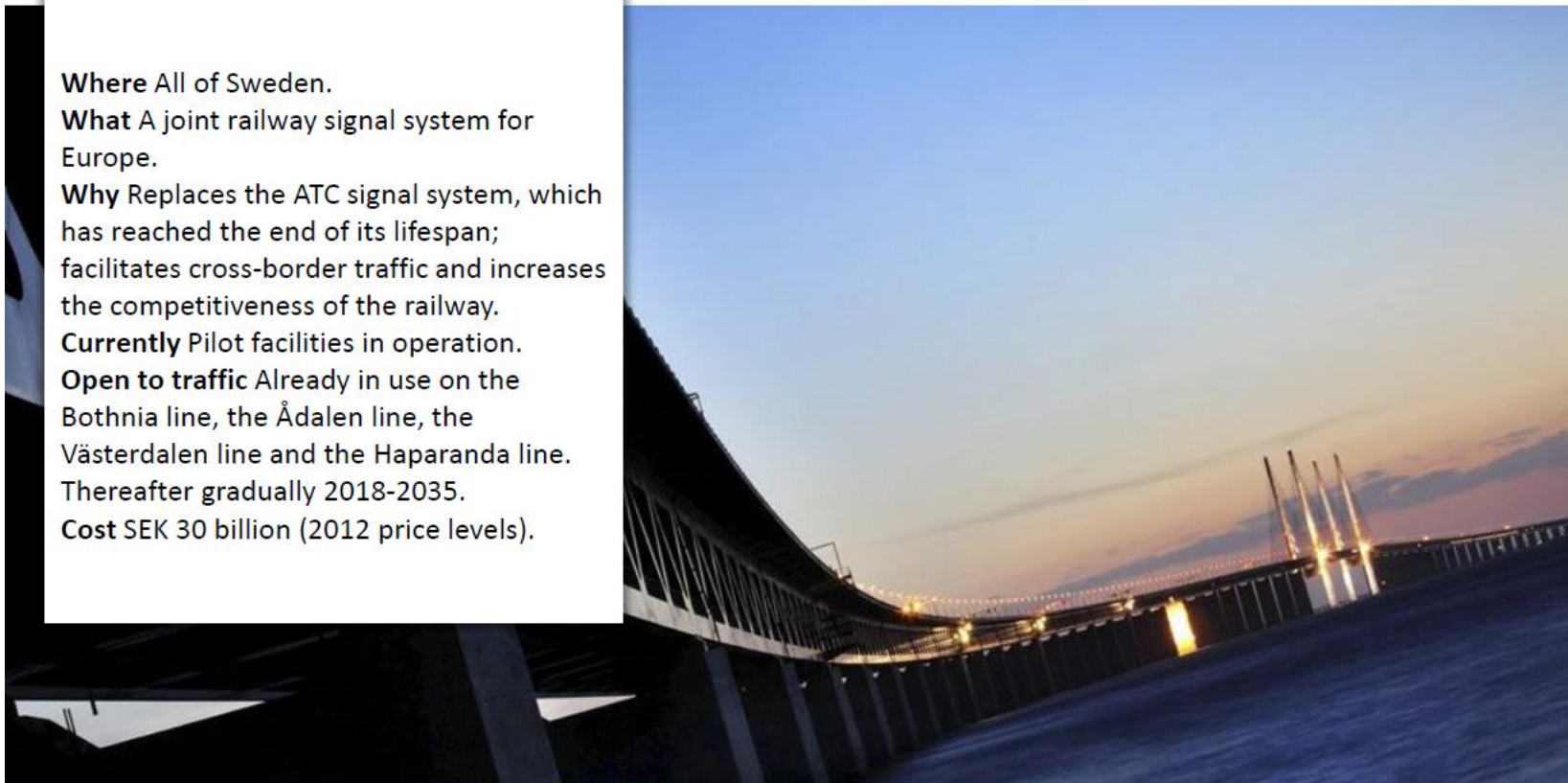
What A joint railway signal system for Europe.

Why Replaces the ATC signal system, which has reached the end of its lifespan; facilitates cross-border traffic and increases the competitiveness of the railway.

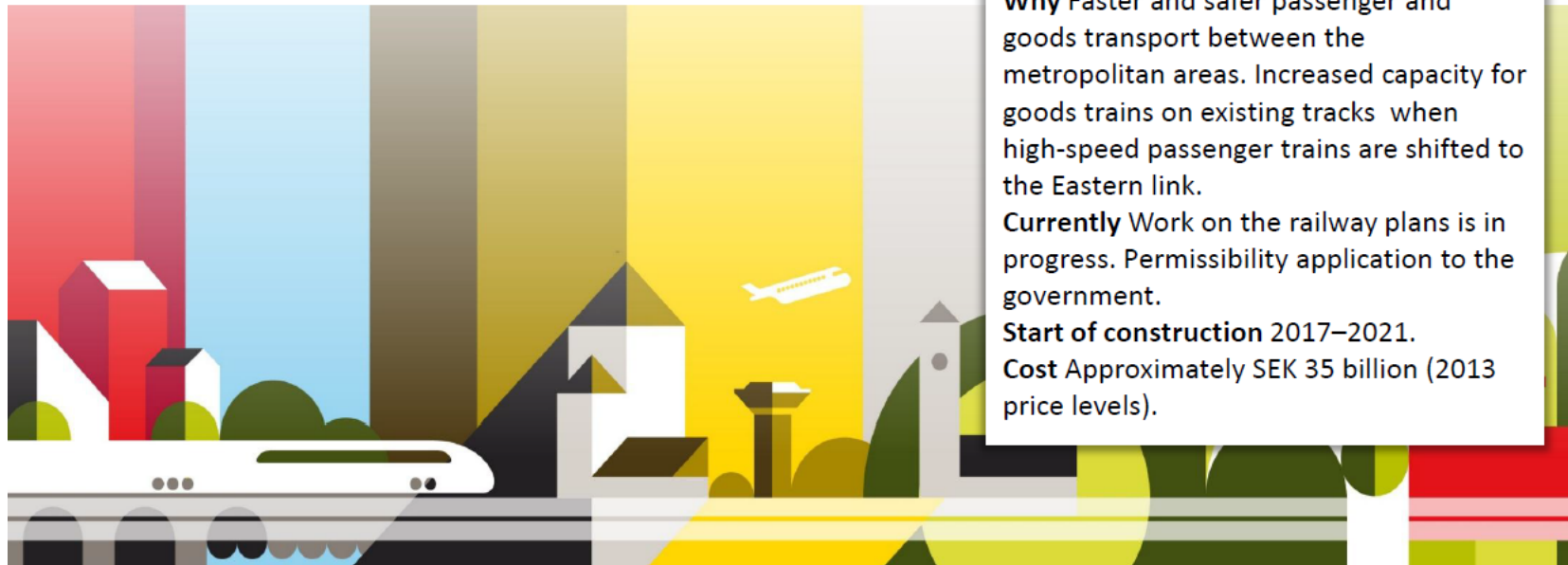
Currently Pilot facilities in operation.

Open to traffic Already in use on the Bothnia line, the Ådalen line, the Västerdalen line and the Haparanda line. Thereafter gradually 2018-2035.

Cost SEK 30 billion (2012 price levels).



The East Link project



Where Södertälje/Järna–Linköping.

What A 150 km new double-track, high-speed railway. Part of a new generation railway between Stockholm and Gothenburg via Jönköping.

Why Faster and safer passenger and goods transport between the metropolitan areas. Increased capacity for goods trains on existing tracks when high-speed passenger trains are shifted to the Eastern link.

Currently Work on the railway plans is in progress. Permissibility application to the government.

Start of construction 2017–2021.

Cost Approximately SEK 35 billion (2013 price levels).



The Gothenburg-Borås project

Where Gothenburg–Borås.

What A 60 km new double-track, high speed railway between the two major cities of western Sweden. Part of a new main line between Stockholm and Gothenburg via Jönköping.

Why Faster journeys between the metropolitan areas, smoother commuting and increased accessibility to Landvetter airport.

Currently Work on the railway plan, preliminary design documents and an Environmental Impact Assessment, EIA in progress.

Start of construction 2020.

Cost Approximately SEK 15 billion (2008 price levels).



The Marieholm Connection Project



Where Gothenburg.

What A new road tunnel under and new railway bridge across the river Göta älv in Gothenburg.

Why The project will reduce vulnerability while increasing the robustness of the road traffic and railway systems. Will reduce traffic through the Tingstad Tunnel.

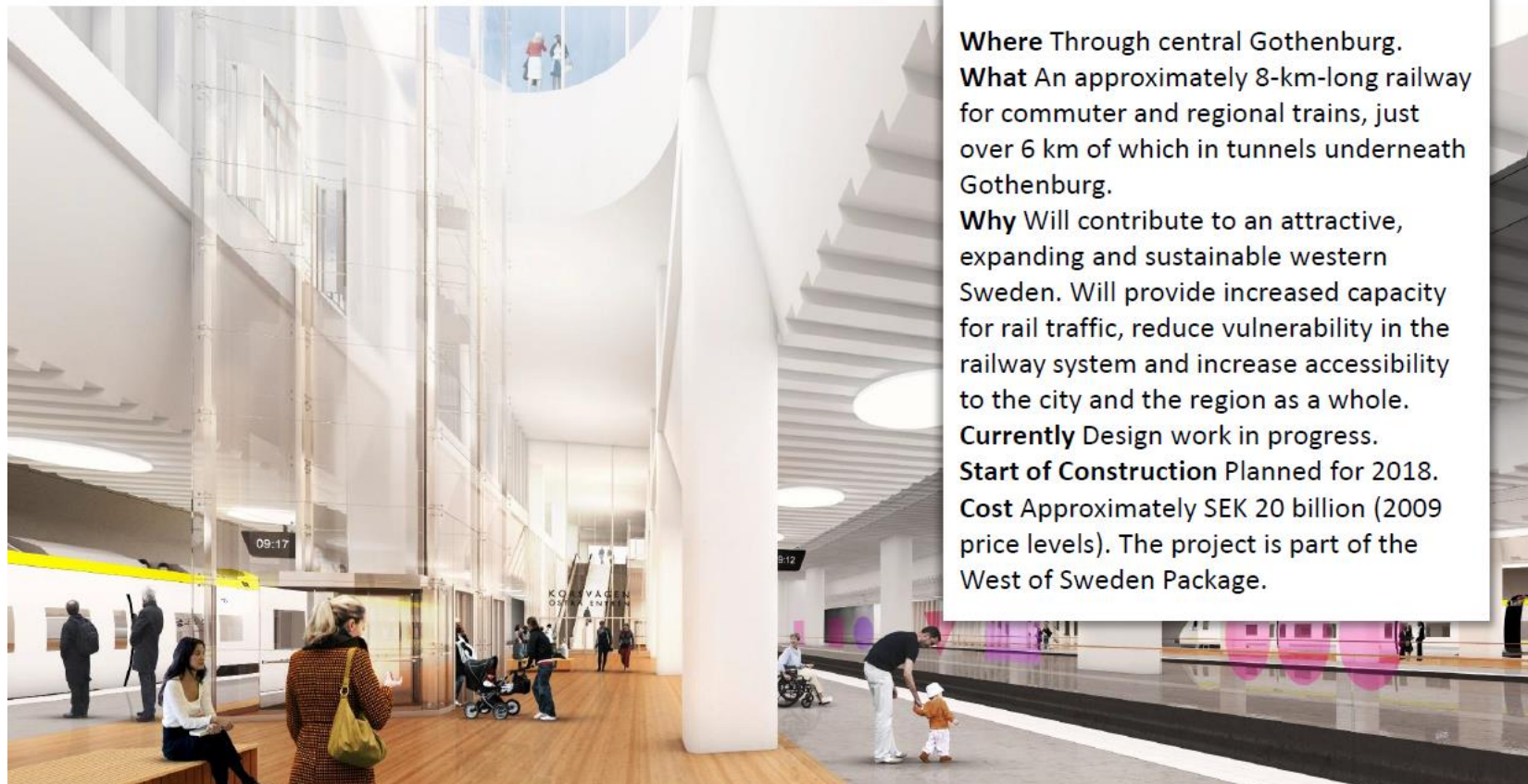
Currently The entire project is in the construction phase.

Open to traffic Railway bridge in 2016, road tunnel in 2020.

Cost The estimated cost of the tunnel is SEK 3.5 billion (2009 price levels); the project is included in the West of Sweden Package. The estimated cost of the Bridge is SEK 1.35 billion (2009 price levels).



The West Link Project



Where Through central Gothenburg.

What An approximately 8-km-long railway for commuter and regional trains, just over 6 km of which in tunnels underneath Gothenburg.

Why Will contribute to an attractive, expanding and sustainable western Sweden. Will provide increased capacity for rail traffic, reduce vulnerability in the railway system and increase accessibility to the city and the region as a whole.

Currently Design work in progress.

Start of Construction Planned for 2018.

Cost Approximately SEK 20 billion (2009 price levels). The project is part of the West of Sweden Package.





THOUSANDS OF SMALLER PROJECTS



TRAFIKVERKET

Trafikverket's Proc. Schedule

Register yourself in our procurement system

CTM for further information on our

ongoing procurements.

Changes since last

month's Procurement Time Schedule

marked with a grey background

Activity	marked with a grey background	Description	Home page/ further info.	Type of procurement	Transp	Road/Railway	Type of assignment	Region	Scheduled date for distribution (yr)	Scheduled date for distribution (mon)	Scheduled date for tender submission (yr)	Scheduled date for tender submission (mon)	Scheduled date for assignment start-up (yr)	Scheduled date for assignment start-up (mon)	Procurement reliability (specifies how certain the procurement)	Estimated cost (SEK million)
Major project	Inspection group, Mälär Line Project	Inspection group	http://www.trafikverket.se/malarbanan	Service		Railway	Technical specialist services	Eastern Region/Stockholm	2014	December	2015	January	2015	February	Green - certain (+/- 2 months)	1-5
Investment	Flackarp-Arlöv, upgrading of Southern Main Line from 2-4 tracks.	8 km of double tracks to be 4 tracks incl. 3 new stations. Includes earthworks, concrete and BEST works. More information expected during 2013. Assumes no appeal against railway plan.	http://www.trafikverket.se/Privat/Projekt/Skane/Flackarp-Arlöv-fyrarspar/	Turnkey project	Transp	Railway	Track/line	Southern Region	2016	March	2017	January	2017	March	Red - information uncertain	>1000
Investment	Roads 881, 882 and 883, Skule - Skuleviken - Sand section and Road 872	Reinforcement of existing road		Construction contract		Road	Road	Central Region	2015	March	2015	April	2015	May	Green - certain (+/- 2 months)	10-20
Investment	Road 662, Rågåller - Språkva section	Construction of road		Turnkey project		Road	Road	Central Region	2015	February	2015	May	2015	September	Green - certain (+/- 2 months)	50-100
Maintenance	Rectifiers and transformers	Rectifiers and transformers		Goods	Transp	Railway	Technically approved material	National	2015	January	2015	February	2015	March	Green - certain (+/- 2 months)	5-10
Major project	E4/E20 Tomtebod-Haga South NS 28, Remaining works, Norrtull	E4/E20 Tomtebod-Haga South NS 28, Remaining works, Norrtull		Construction contract		Road	Road	Eastern Region/Stockholm	2015	February	2015	May	2015	September	Orange - approximate (+/- 6 months)	20-50
Major project	E4/E20 Tomtebod-Haga South NS 20, Railway tunnel	E4/E20 Tomtebod-Haga South NS 20, Railway tunnel		Construction contract		Railway	Tunnel	Eastern Region/Stockholm	2017	February	2017	June	2017	September	Orange - approximate (+/- 6 months)	300-500
Major project	E4/E20 Tomtebod-Haga South NS 20, Railway tunnel NS 21 Track BEST works	E4/E20 Tomtebod-Haga södra NS 21 Spår BEST		Construction contract		Railway	BEST (Track, Electrical, Signal and Telecom)	Eastern Region/Stockholm	2017	December	2017	December	2018	December	Orange - approximate (+/- 6 months)	20-50
Major project	E4/E20 Tomtebod-Haga södra NS 29 Pedestrian and cycle route on Pampaslänken	E4/E20 Tomtebod-Haga södra NS 29 Pedestrian and cycle route on Pampaslänken		Construction contract		Road	Road	Eastern Region/Stockholm	2015	February	2015	May	2015	September	Orange - approximate (+/- 6 months)	20-50
Investment	Road 554 Vännäsby	Risk-reducing measures		Performance contract		Road	Road	Northern Region	2015	January	2015	February	2015	April	Orange - approximate (+/- 6 months)	5-10
Investment	The Umeå Project E10, Bridge over the Umeå River	The Umeå Project E10, Bridge over the Umeå River		Turnkey project		Road	Bridge	Northern Region	2015	November	2016	February	2016	May	Orange - approximate (+/- 6 months)	300-500
Investment	The Umeå Project E08, Road E12 north of the Umeå River	The Umeå Project E08, Road E12 north of the Umeå River		Turnkey project		Road	Road	Northern Region	2016	January	2016	April	2016	July	Orange - approximate (+/- 6 months)	100-300
Investment	The Umeå Project E09, Road E12 South of the Umeå River	The Umeå Project E09, Road E12 South of the Umeå River		Turnkey project		Road	Road	Northern Region	2015	September	2016	January	2016	March	Orange - approximate (+/- 6 months)	300-500
Major project	E 9829 Barkarby Station region, Mälär Line Project	Construction of a new commuter train station, new bus terminal and road rerouting	http://www.trafikverket.se/malarbanan	Performance contract	Transp	Railway	Building construction/Real estate	Eastern Region/Stockholm	2014	December	2014	February	2015	April	Green - certain (+/- 2 months)	50-100

- ▶ <http://www.trafikverket.se/en/startpage/Suppliers/Procurement/Planned-procurements/>

WELCOME TO SWEDEN



CONTACT DETAILS



Sören Pettersson

Senior Investment Advisor, Business Sweden
Soren.pettersson@business-sweden.se